

38 WELLINGTON STREET, WOOLWICH, SE18 6QF

NEW MIXED USE DEVELOPMENT TO LET
POTENTIAL FOR OFFICE/LEISURE/RETAIL USES



LOCATION

The premises are to form part of a newly developed mixed use scheme providing residential to the upper floors and ground floor commercial.

The premises adjoin the Woolwich Town Hall and are opposite the new Woolwich Central development, anchored by Tesco Extra.

Wellington Street links the John Wilson Street to Woolwich Arsenal rail & DLR station.

SIZE

GIA (455 sq m) 4,890 sq ft

Subject to Contract & Exclusive of VAT

These particulars and the descriptions and measurements therein do not form part of any contract and whilst every effort has been made to ensure accuracy, this cannot be guaranteed. Smart 4 Limited, 3 Hanover Square, London W1S 1HD.



For further details:

020 7569 9900

www.SMART-4.co.uk

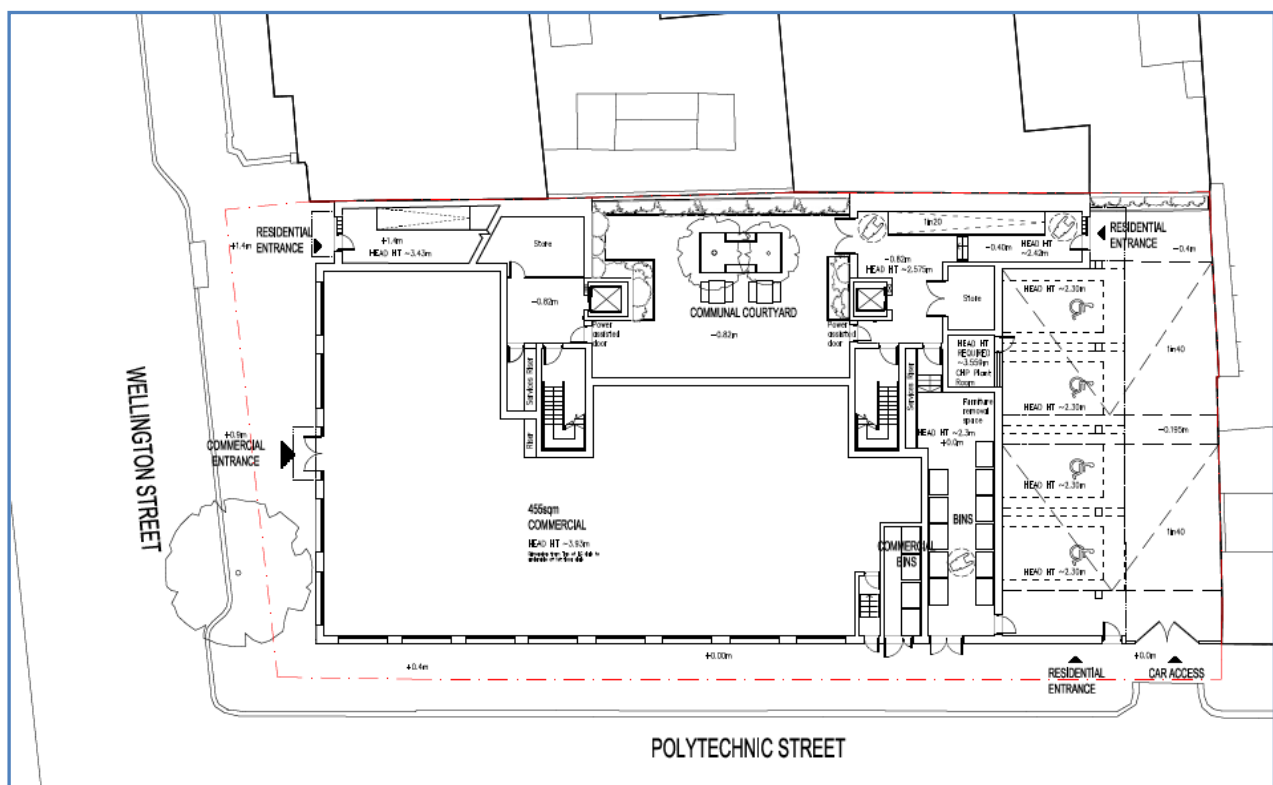
LEASE & RENT

New lease available on terms to be agreed.

PLANNING

Consent is granted for A3/A4 & D2 uses.

The property would suit alternative uses including office and business space subject to planning.



FURTHER INFORMATION

Hamish Smith
Ian Rusbridge

020 7569 9908
020 7569 9903

hs@SMART-4.co.uk
idr@SMART-4.co.uk